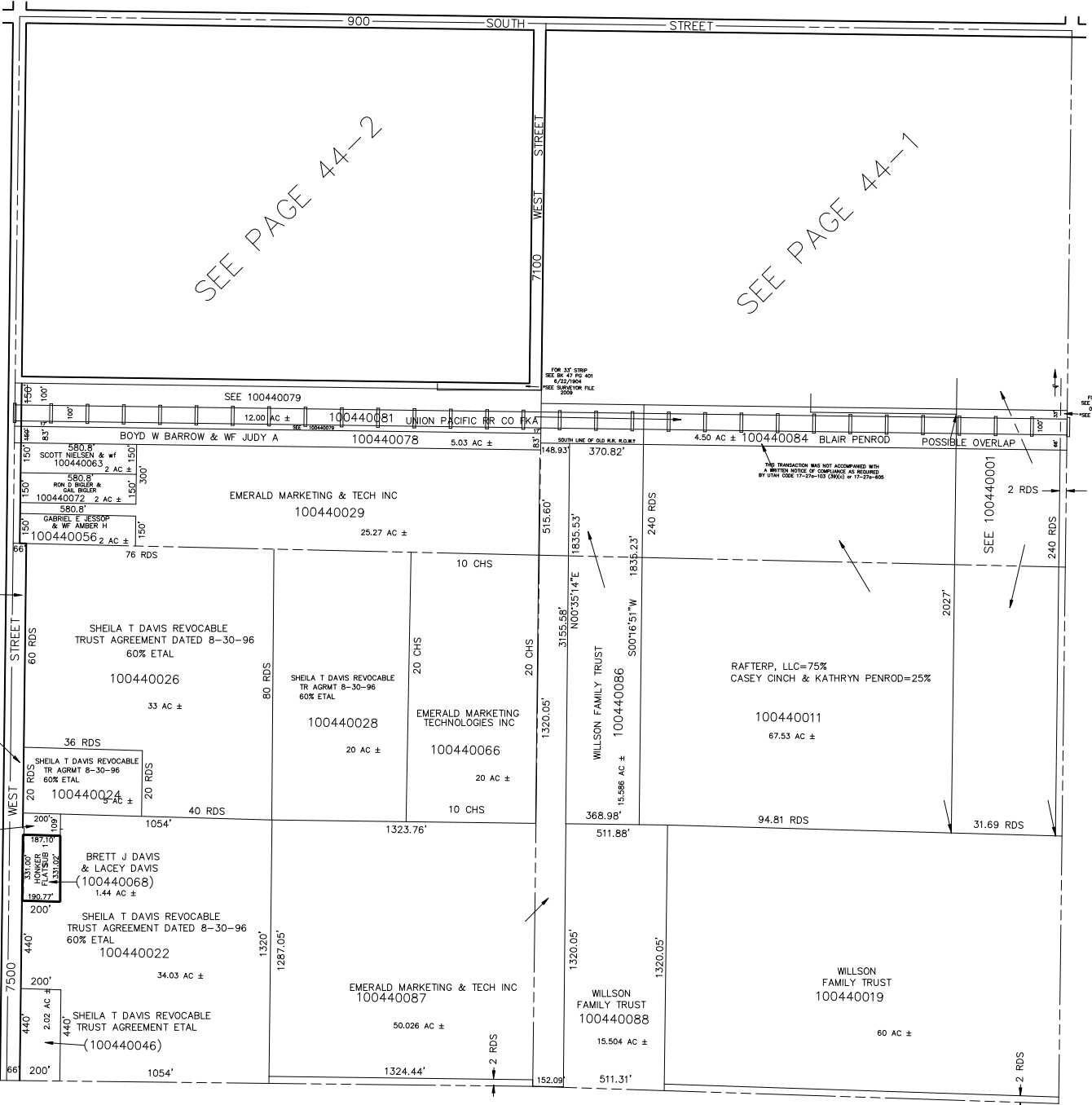


SECTION 23, T.6N., R.3W., S.L.B.& M.

IN WEBER COUNTY
SCALE 1" = 400'

TAXING UNITS: 303

SEE PAGE 36



SEE PAGE 43

WEBER COUNTY (100440027)

WEBER COUNTY (100440025)

REBECCA MAULDIN (100440023) 21,800 SQ FT

SEE PAGE 45

SEE PAGE 47